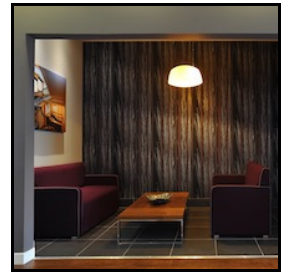
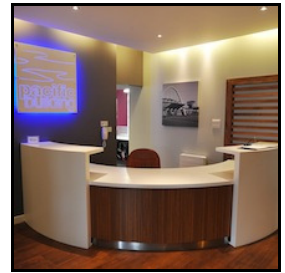
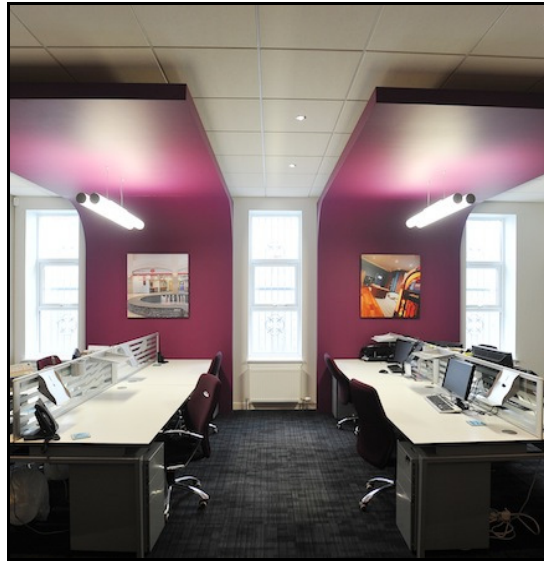


## Pacific Building Head Office

**Location:** 31-33 Earl Haig Road, Hillington, Glasgow G52 4JU  
**Value:** £220,000  
**Timescale:** 14 Weeks



## Challenge

After deciding to move from their premises in Paisley to larger premises nearby, Pacific embarked on an ambitious programme to create a new head office that would not just meet the needs of a growing business and its staff but act as a showcase of the company's talents and the sectors in which it operates.

During the 14-week project, the drab interior of the existing single-tier brick building, situated on a typical 1950s industrial estate, had to be transformed and the landlord's existing shell significantly upgraded. An additional pressure was the knowledge that, at every stage in the process, Pacific's own reputation was on the line, instead of that of a client. Furthermore, the £220,000 budget had to deliver maximum "bang for buck" in terms of quality and quantity.

## Approach

Pacific had a clear vision of what they wanted to achieve and drew on their vast experience to deliver their own programme in a manner that has resulted in successful project completions for big-name clients such as Gleneagles Hotel, Mitchells & Butlers, Bupa, BAA (Now Heathrow Airport Holdings), JD Wetherspoon, McDonald's and KFC.

Each of the sectors in which Pacific operates – airports, commercial, hotels, leisure and retail – is recreated on a smaller scale in different areas within the building, giving visitors and clients an indication of the diverse capabilities of the firm.

## Results

The finished article is an imaginative and visually striking head office, comprising offices and meeting rooms, covering 5,000 square feet, with the potential for expansion in the future. The expertise for which Pacific is renowned is proudly showcased in a way that highlights the complete service provided for clients looking to create dynamic and inspiring work spaces.

The completed project caught the eye of Archie Ferguson, chair of industry body Construction Scotland, who said: "Pacific Building is an excellent example of the significant skills and expertise available within the Scottish construction sector. The work on show in the new premises demonstrates the diverse capabilities which have helped the firm to deliver impressive results for clients across the UK and Ireland."